

Learn more & request
a FREE TRIAL at
spaceclaim.com/concept

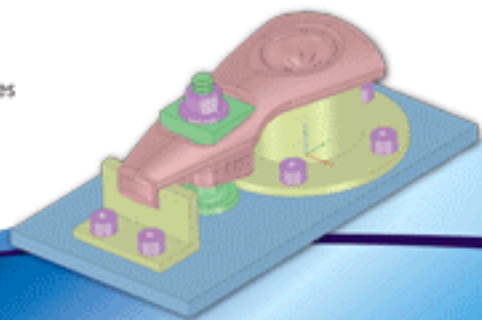
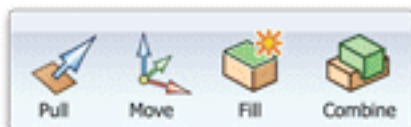
CAD Getting in the Way of Effective Product Design?

Do you need a 3D tool that lets you develop
new product concepts simply?

With SpaceClaim Engineer, the leading 3D
direct modeler, you can design freely and quickly.

SpaceClaim solves common CAD problems:

- >> Create new concept models that you can share with your customers, R&D engineers, CAE analysts, manufacturing, and the detailed design CAD team
- >> Focus on the idea rather than the traditional CAD features trees and processes
- >> Merge data from various CAD formats, supplier components, and in-house CAD data in one environment
- >> Pinpoint product costs early and increase profitability
- >> Collaborate in real-time with your design team in 3D, rather than worrying about traditional CAD feature trees
- >> Create photorealistic renderings before going to CAD for detailed design



SpaceClaim Engineer:
Powerful yet easy-to-use 3D for all engineers.

Toll Free: 800-636-6004 +1-978-482-2548 info@spaceclaim.com

© Copyright 2011 SpaceClaim Corporation. SpaceClaim is a registered trademark of SpaceClaim Corporation. All other names mentioned herein are either trademarks or registered trademarks of their respective owners.



SPACECLAIM
CORPORATION

Visit Us Online at www.spaceclaim.com